

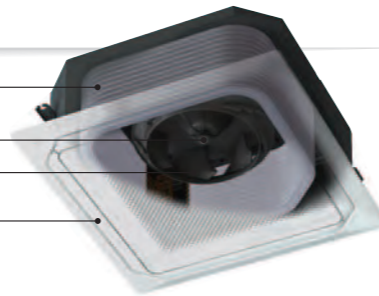


Features

Unique Circular Flow design

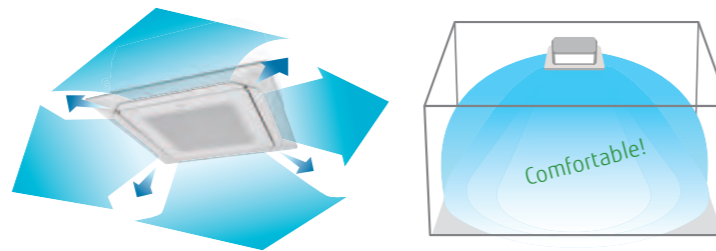
New Cassette type realizes Circular Flow to blow large airflow in 360° direction by mounting high performance DC fan motor, new turbo fan and unique seamless airflow louver design.

- ø7mm high density heat exchanger
- New DC fan motor
- High efficient turbo fan
- Seamless airflow louver



Uniform temperature air conditioning

Achieve a comfortable air conditioning spread to every corner of the room by circular flow & wide vertical airflow.



Individual louver control

Each louver can be set individually by Touch Panel Wired Remote Controller to enjoy the comfort of different directional airflows according to various room layouts.

*Touch Panel Wired RC (UTY-RNRYZ1) only

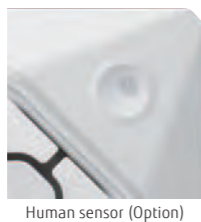


Comfortable air conditioning by preventing direct blowing of cold air and by providing swinging air flow simultaneously.

Efficient air conditioning based on the room layout

Human sensor increases more energy saving

Energy saving operation starts automatically by detecting the motion of a person. 2 modes of save operation mode and stop mode can be selected.

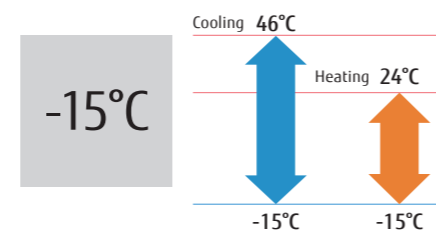


2 modes can be selected.

- Auto saving** Power is saved while people are away.
- Auto OFF** Operation stops after people go out.

*Touch Panel Wired RC (UTY-RNRYZ1) only

Low ambient operation



Model: AUXG18LRLB / AUXG24LRLB
AUXG30LRLB / AUXG36LRLB / AUXG45LRLB / AUXG54LRLB



Touch Panel Wired R.C.



For AUXG18/24LRLB



For AUXG30/36LRLB



For AUXG45/54LRLB

Specifications

Model No.	Indoor unit		AUXG18LRLB	AUXG24LRLB	AUXG30LRLB	AUXG36LRLB	AUXG45LRLB	AUXG54LRLB	
	Outdoor unit		AOYG18LBCA	AOYG24LBCA	AOYG30LBTB	AOYG36LBTB	AOYG45LBTB	AOYG54LBTB	
Power Source	Single-phase, ~230V, 50Hz								
Capacity	Cooling	kW	5.2 (0.9-6.5)	6.8 (0.9-8.0)	8.5 (2.8-10.0)	9.5 (2.8-11.2)	12.5 (4.0-14.0)	13.3 (4.5-14.5)	
	Heating		6.0 (0.9-8.0)	7.8 (0.9-9.1)	10.0 (2.7-11.2)	10.8 (2.7-12.7)	14.0 (4.2-16.2)	15.8 (4.7-16.5)	
Input Power	Cooling/Heating	kW	1.42/1.50	2.16/2.18	2.56/2.77	2.96/2.91	3.85/3.73	4.38/4.58	
EER	Cooling	W/W	3.66	3.15	3.32	3.21	3.25	3.04	
	Heating		4.00	3.58	3.61	3.71	3.75	3.45	
Pdesign	Cooling/Heating(-10°C)	kW	5.2/4.3	6.8/6.0	8.5/8.0	9.5/8.7	-	-	
SEER	Cooling	W/W	7.05	6.60	6.70	6.40	-	-	
	Heating (Average)		4.40	4.20	4.30	4.30	-	-	
Energy Efficiency Class	Cooling	A	A++	A++	A++	A++	-	-	
	Heating (Average)		A+	A+	A+	A+	-	-	
Max. Operating Current	Cooling/Heating	kWh/a	10.0/13.5	13.5/18.5	17.0/17.0	20.0/20.0	20.5/20.5	21.5/21.5	
	Cooling		258	361	444	519	-	-	
Annual Energy Consumption	Heating	l/h	1367	1999	2604	2833	-	-	
	Cooling		2.2	2.7	2.5	3.3	4.5	5.0	
Sound Pressure Level	Indoor (Cooling)	H/M/L/Q	33/32/31/28	35/33/32/29	40/38/36/33	44/41/38/34	46/42/39/35	47/43/40/36	
	Indoor (Heating)		33/32/31/28	35/33/32/29	40/38/36/33	44/41/38/34	46/42/39/35	47/43/40/36	
Sound Power Level	Outdoor(Cooling/Heating)	High	51/50	55/56	53/55	54/55	55/55	55/57	
	Indoor(Cooling/Heating)		47/47	49/49	54/54	58/58	60/60	61/61	
Airflow Rate	Outdoor(Cooling/Heating)	High	64/62	68/68	67/69	68/70	68/68	69/71	
	Indoor / Outdoor		High	m³/h	1050/1900	1150/2460	1600/3600	1900/3800	2000/6750
Net Dimensions H x W x D	Indoor	kg(lbs)	mm	246×840×840	246×840×840	288×840×840	288×840×840	288×840×840	288×840×840
			mm	24 (53)	24 (53)	26 (57)	26 (57)	29 (64)	29 (64)
Weight	Outdoor	kg(lbs)	mm	620×790×290	620×790×290	830×900×330	830×900×330	1290×900×330	1290×900×330
			mm	41 (90)	41 (90)	61 (134)	61 (134)	86 (189)	86 (189)
Connection Pipe Diameter (Liquid / Gas)	mm		6.35/12.7	6.35/15.88	9.52/15.88	9.52/15.88	9.52/15.88	9.52/15.88	
Drain hose Diameter (I.D./O.D.)	mm		25/32	25/32	25/32	25/32	25/32	25/32	
Max Pipe Length (Pre-Charge)	m		30 (15)	30 (15)	50 (20)	50 (20)	50 (20)	50 (20)	
Max Height Difference	m		20	20	30	30	30	30	
Operation Range	Cooling	°CDB	-15 to 46	-15 to 46	-15 to 46	-15 to 46	-15 to 46	-15 to 46	
	Heating		-15 to 24	-15 to 24	-15 to 24	-15 to 24	-15 to 24	-15 to 24	
Refrigerant	Type (Global Warming Potential)	R410A (2,088)							
	Charge	g	1,800	1,800	2,100	2,100	3,350	3,350	
Cassette Grille	Model name	UTG-UKYA-W							
	Dimensions (H x W x D)	mm	53×950×950	53×950×950	53×950×950	53×950×950	53×950×950	53×950×950	
	Weight	kg(lbs)	6.0 (13)	6.0 (13)	6.0 (13)	6.0 (13)	6.0 (13)	6.0 (13)	

Optional parts

- | | | | |
|---------------------------|--|---|------------------------|
| Wired Remote Controller: | UTY-RNRYZ1, UTY-RVNYM, UTY-RLRY, UTY-RNNYM | Panel Spacer: | UTG-BKXA-W |
| Simple Remote Controller: | UTY-RSNYM | Air Outlet Shutter Plate: | UTR-YDZK |
| IR Receiver Kit: | UTY-LBTYC | Insulation Kit For High Humidity: | UTZ-KXRA |
| Human Sensor Kit: | UTY-SHZXC | Fresh Air Intake Kit: | UTZ-VXRA |
| Wide Panel: | UTG-AKXA-W | External input and output PCB (with box): | UTY-XCSX + UTZ-GXRA |
| | | External connect kit: | UTY-XWZXZG, UTY-XWZXZ3 |



Dimensions

(Unit : mm)

